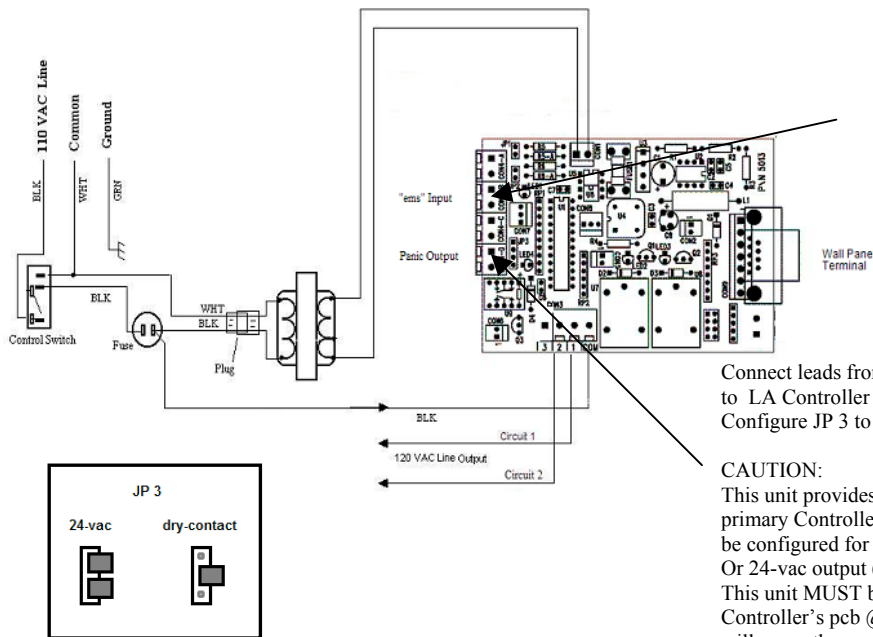


Connection at the LA Series Companion Controller:

Make wiring connections at the LA Series Companion Controller as illustrated.

Dual Output Unit with Output Terminal for Integration with Primary Utility Controller



Connect leads from Primary Controller Terminal 2 to Terminal 1 at LA – PCB
 “24-VAC Input “ems””.
 NOTE: Where two primary Controllers are connected to the LA unit then the second input should be connected @ CON 4-C.

Connect leads from Primary Controller Terminal to LA Controller PC Board “Remote Panic Output”.
 Configure JP 3 to match primary controller configuration.

CAUTION:

This unit provides for a momentary “Panic” signal for transmission to the primary Controller when this unit’s Panic Button is pressed. The output may be configured for dry-contact (jumper in center two posts @ JP 3) Or 24-vac output (two jumpers in place @ JP3). This unit MUST be configured to match input configuration on the primary Controller’s pcb @ CON 1b. Failure to properly configure the output to input will cause the system to malfunction and may cause damage to both units.

Dual 120-VAC Output Configuration

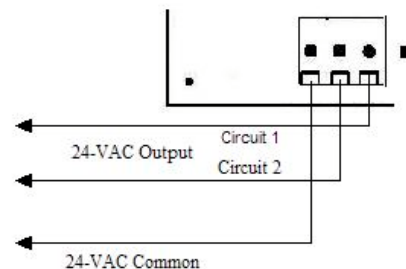
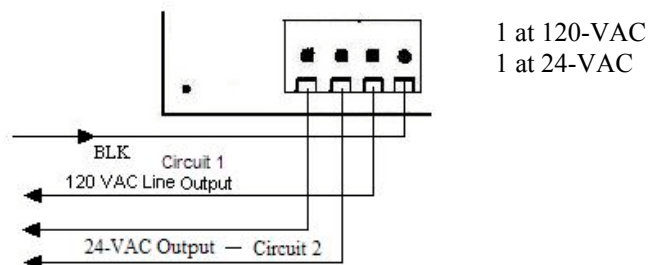
To connect to “Aux. Panic Input” a Controller, dry-contact at this unit.

To connect to “Isolated Panic Input” a Controller, 24-vac at this unit.

See JP-3 configuration chart at left.

CAUTION: DO NOT install inner-connect cabling between Primary Utility Controller and Companioned LA-Series Controller in conduit with Live Voltage or 24-VAC control/operating voltage for solenoids.

Combo - Dual Output Configuration



Dual 24-VAC Output Configuration

Test the Unit:

Activate both units in the system. Place the Utility Controller into Panic by striking this Remote Panic Button. All door panel LED's should illuminate to indicate that the unit is in the Panic Mode. The LA Series Panel should deactivate. Reset the LA Series Panel. The Primary Utility Controller should still be in the Panic Mode.

Activate both units in the system. Strike the panic button on the LA Series Panel. The LA Panel should deactivate and the Primary Controller should be in the Panic Mode. Reset the Primary Utility Controller. The LA Series Panel should remain inactive.

If the unit fails to operate, contact *ISIMET* or a factory representative.